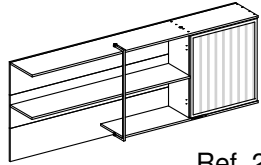


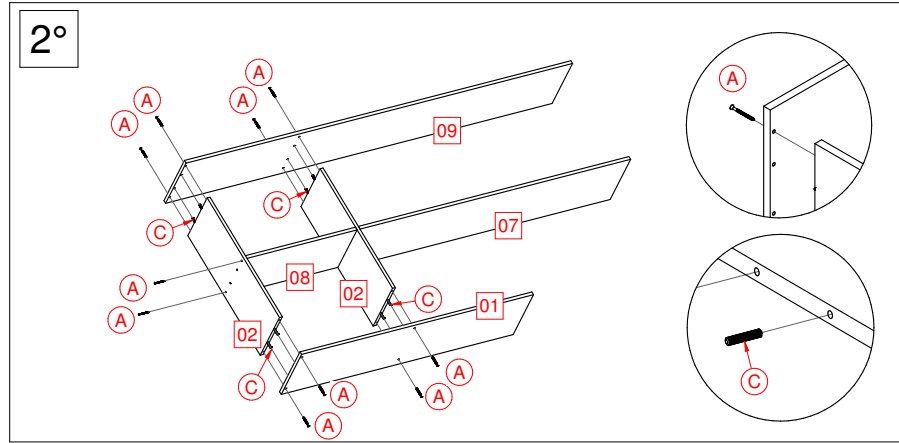
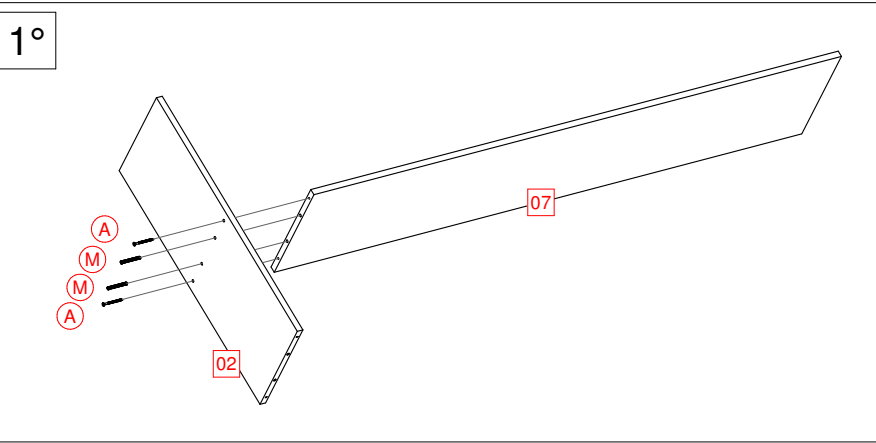


CARRARO
MÓVEIS

Rua Nelson Carraro, 2001 - Bento
Gonçalves - Rio Grande do Sul -Brasil -
Cep: 95702-798 Fone: (55) 54 3455 12 12
www.carraro.com.br



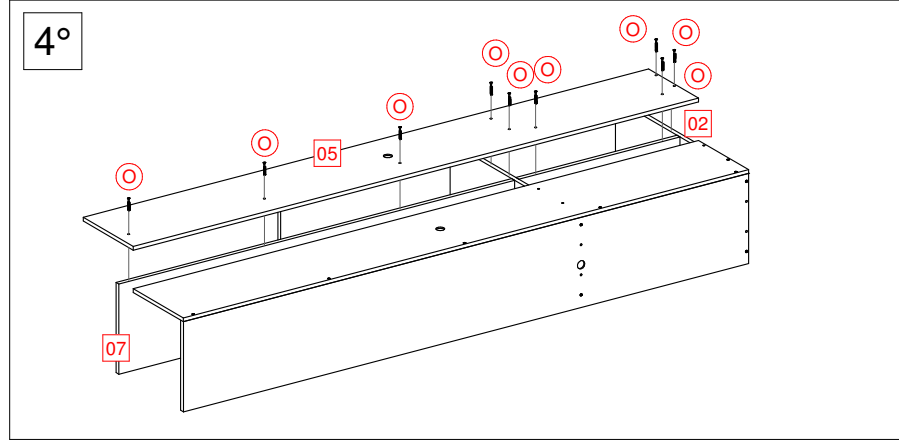
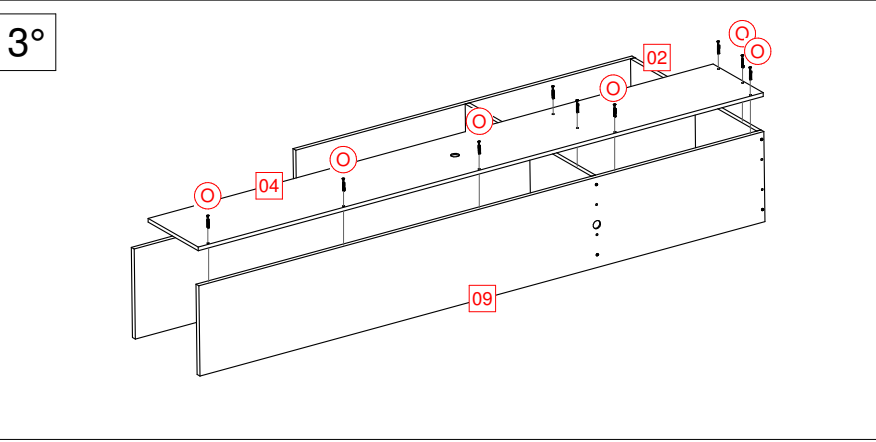
Ref. 2504



ATENÇÃO!
1-Ler e observar atentamente toda a instrução antes de iniciar a montagem.
2-A montagem do produto deverá ser feita em uma superfície limpa e plana. Aconselhamos utilizar a embalagem para forrar o chão a fim de não danificar o produto.

ATENCIÓN
1-Leer y observar con mucha atención toda la instrucción antes de empezar el montaje.
2 - El montaje del producto deberá ser hecho en una superficie limpia y plana. Aconsejamos poner el embalaje del producto em el suelo de manera a evitar daños en el mismo.

ATTENTION!
1-Please, read and check carefully the whole instruction before assembling.
2-The assembly should be carried out on a clean and flat surface. We suggest you use the packaging to cover the floor in order to do not damage it and the product.

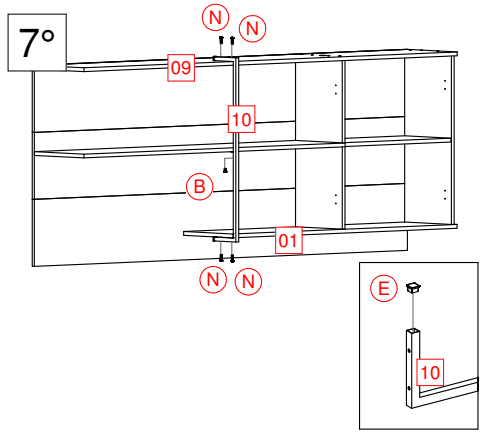
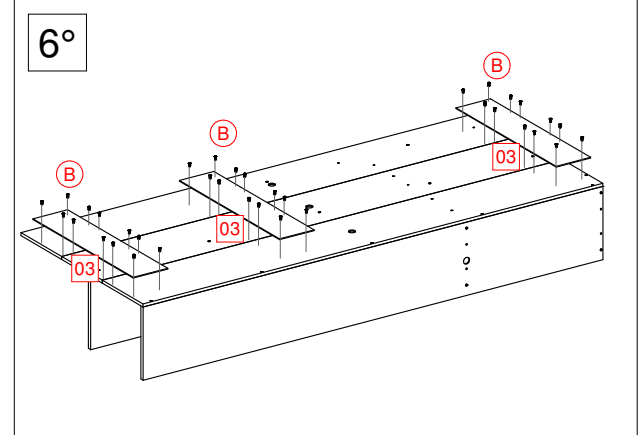
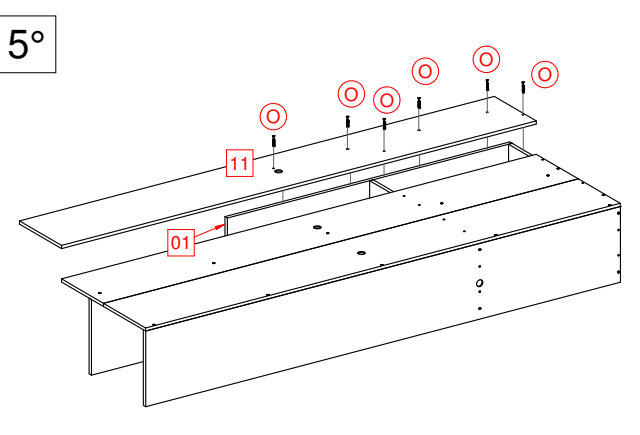


LIMPEZA!
1-Utilize pano levemente umedecido com água seguido de pano seco.
2-Não utilizar produtos químicos ou abrasivos.

LIMPIEZA
1-Utilizar um paño húmedo con agua y después pasar una paño seco.
2-No utilizar productos químicos o abrasivos.

CLEANING
1-Use a slightly wet cloth followed by a dry one.
2-Do not use chemical or abrasive products.

Herramientas Necesarias (no suministradas)
Tools Required (not supplied)
Ferramentas Necessárias (não fornecidas)

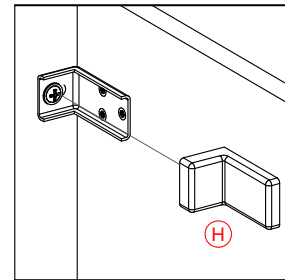
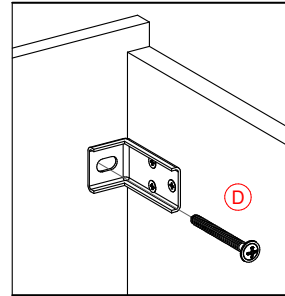
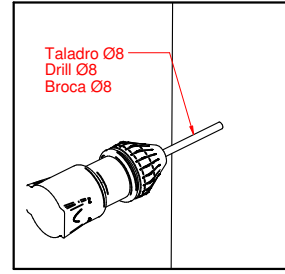
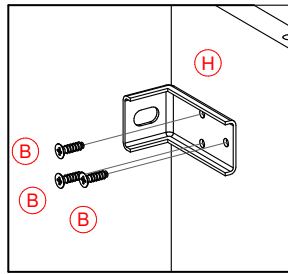
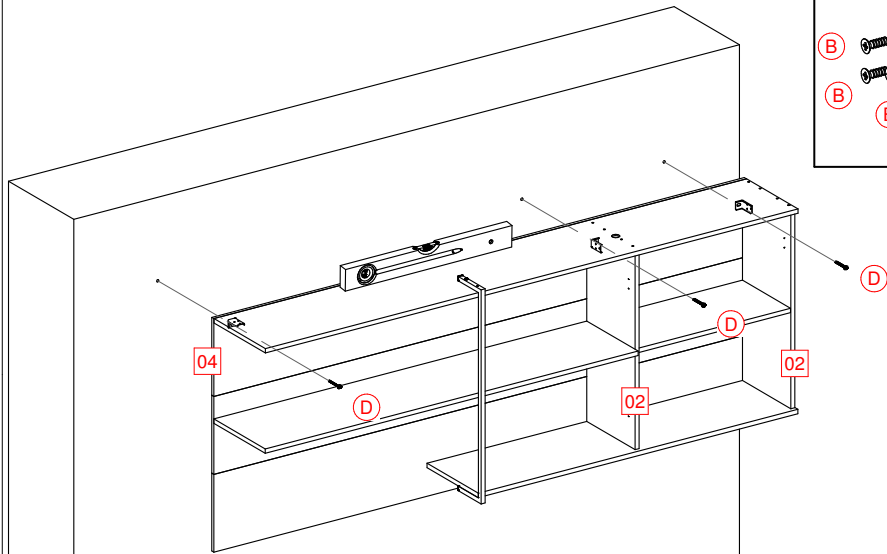


Pessoas necessárias para a montagem
Personas necesarias para el montaje
People required for assembly

A		B		C		D		E		F		G			
H		I		J		K		L		M		N		O	

N°	Qt.	Español	English	Português	N°	Qt.	Español	English	Português
01	1	Base	Base	Base	07	1	Estante Maior	Biggest Shelf	Prateleira Maior
02	2	Lateral	Side Panel	Lateral	08	1	Estante Menor	Smallest Shelf	Prateleira Menor
03	3	Unión del costado	Union for back panel	União das Costas	09	1	Tapa	Top	Tampo
04	1	Costado Superior	Top Back Panel	Costa 12 mm Superior	10	1	Tubo	Tube	Tubo Prateleira Soldado
05	1	Costado	Back Panel	Costa 12 mm	11	1	Costado Inferior	Bottom Back Panel	Costa 12 mm Inferior
06	1	Puerta de Vidrio	Glass Door	Porta de Vidro	13	1	Tirador	Handle	Puxador

8°

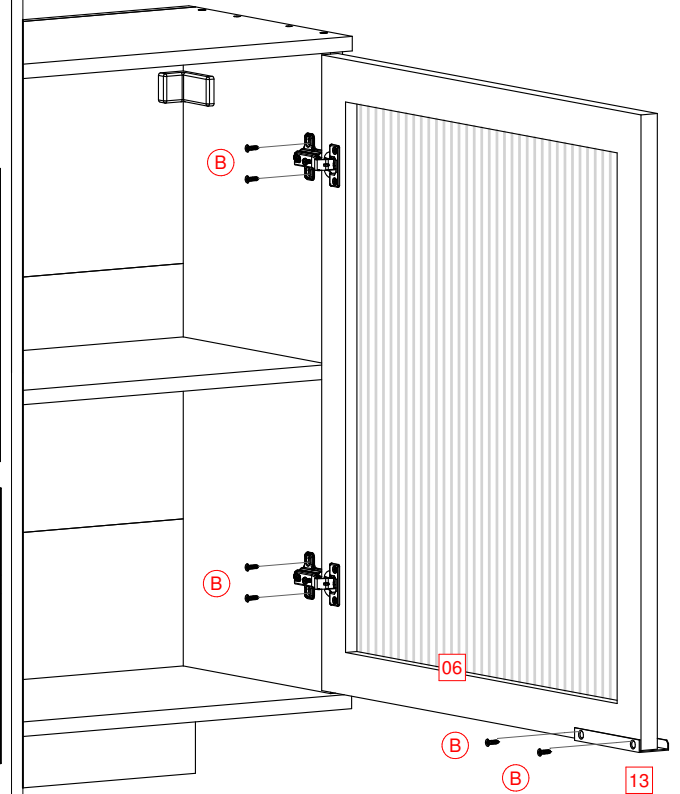


Para fixar o Módulo na Parde utilize o suporte de fixação (H), Parafusos (D), Bucha 8mm (G) e o Acabamento do Suporte.

Para fijar el módulo al cartón, utilice el soporte de fijación (H), Tornillos (D), casquillo de 8mm (G) y el remate del soporte.

To attach the module to the wall, use the mounting bracket (H), Screws (D), 8mm Bushing (G) and the Finishing Support.

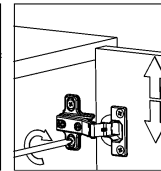
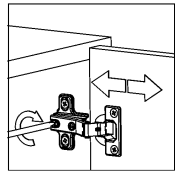
9°



Ajuste de las Puertas / Door Adjustment / Ajuste das Portas

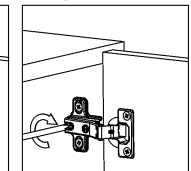
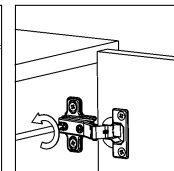
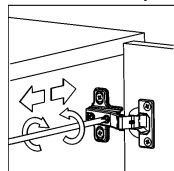
Ajuste de la Profundidad
Depth Adjustment
Ajuste de Profundidade

Ajuste del Alto
Height Adjustment
Ajuste de Altura



Ajuste Interno / Internal Adjustment
Ajuste Interno

Encaje de la Puerta/Door
Setting/Encaixe da Porta



10°

